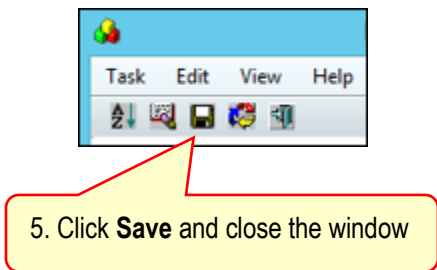
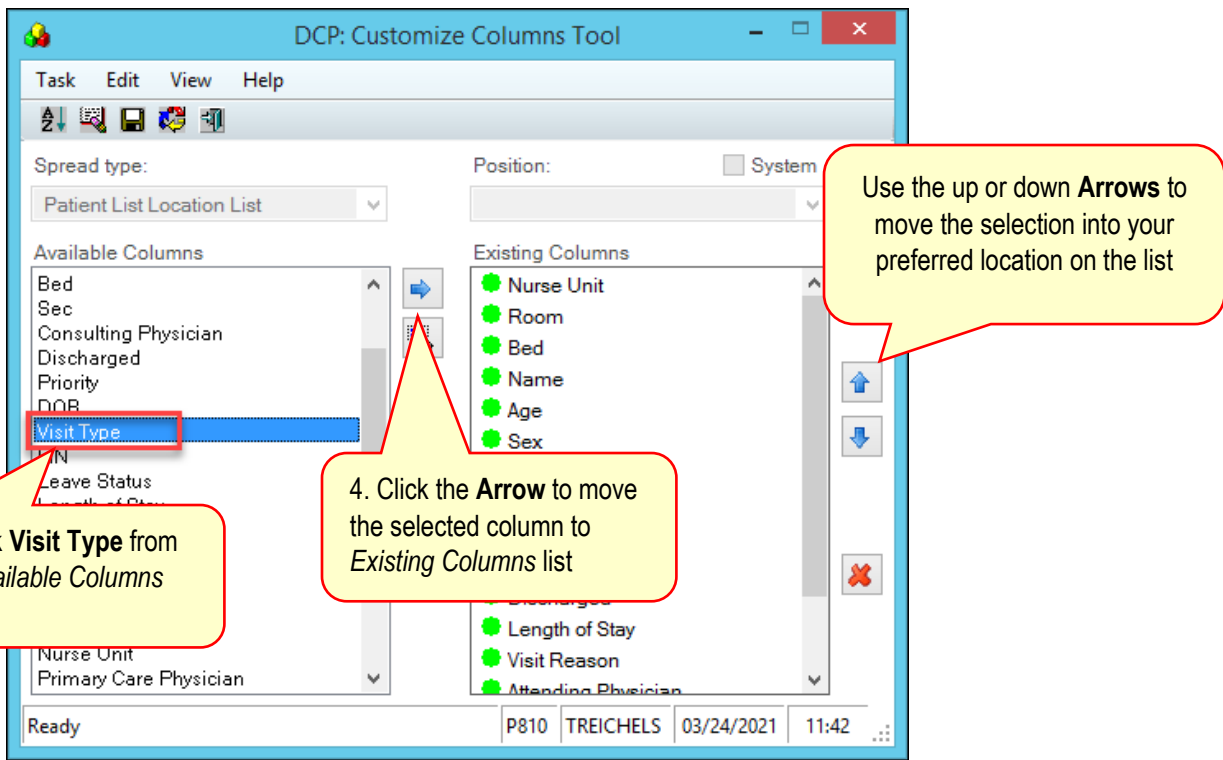
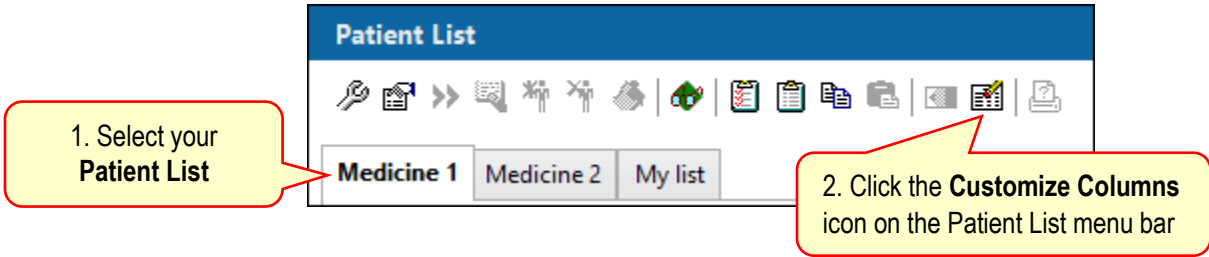


# Adding Visit Type to the Patient List View

Visit Type can be added to your Patient List view to display the encounter type for the patient.

## From Patient Lists

Complete the following steps to add the **Visit Type** column to an existing Patient List.



Medical Service	VIP Code	Visit Type
Internal Medicine		Inpatient
Internal Medicine		Inpatient
Internal Medicine		Inpatient
Internal Medicine		Inpatient
Internal Medicine		Inpatient
Cardiology		Observation
Internal Medicine		Inpatient
Internal Medicine		Inpatient

Visit Type will display on your Patient List